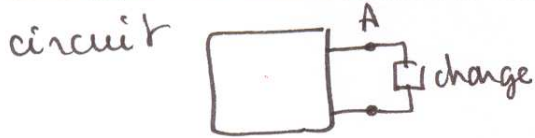


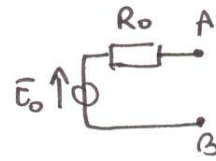
# Première STI (4)

## Thévenin - La transformation

Transformation de Thévenin:



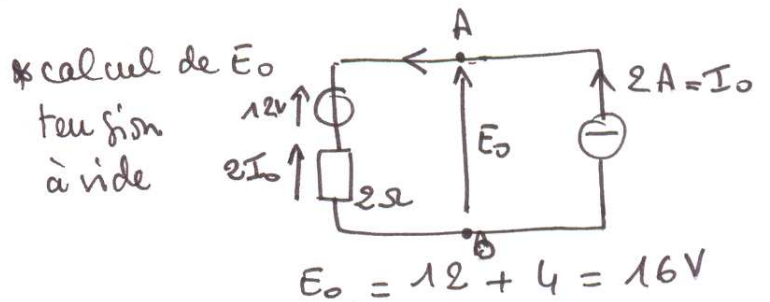
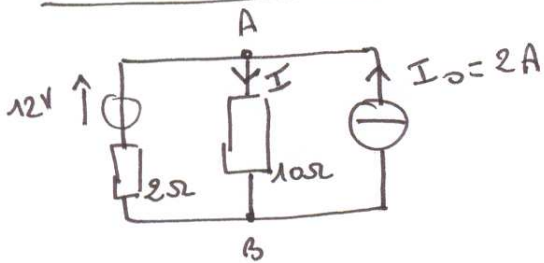
remplacé par



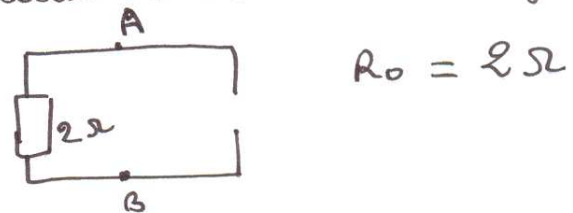
$E_0$  tension à vide entre A et B

$R_0$  résistance du circuit rendu passif (on "éteint" les générateurs)

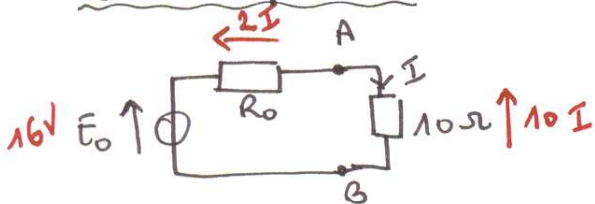
Exercice corrigé: calculer I



\* calcul de  $R_0$ : on éteint les générateurs



circuit équivalent:



$$16 - 2I - 10I = 0$$

$$I = \frac{16}{12} = \frac{4}{3} = \underline{\underline{1,33A}}$$

Exercice à faire: calculer  $V_R$

