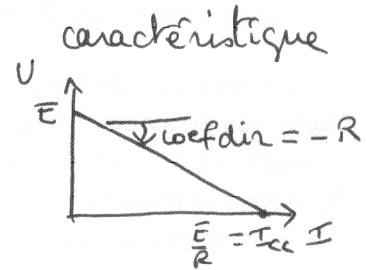
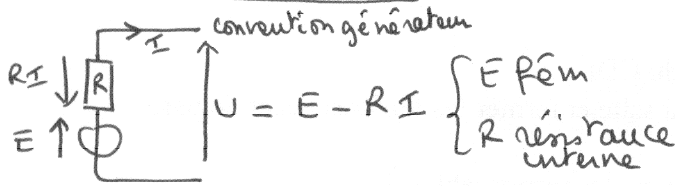


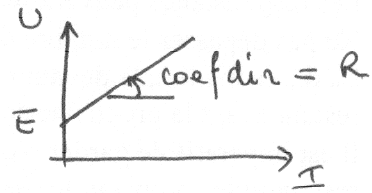
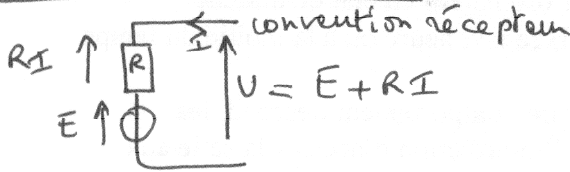
Première STI Révision ②

Electromoteurs, circuits à 1 maille

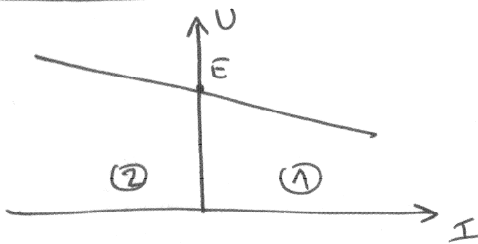
Electromoteur générateur:



Electromoteur récepteur:



Electromoteur réversible:



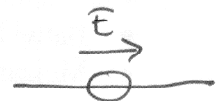
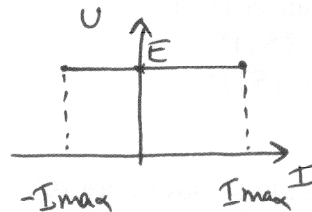
convention générateur

quadrant 1 $P = UI > 0$ dipole générateur

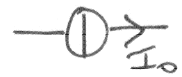
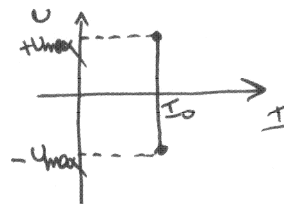
quadrant 2 $P = UI < 0$ dipole récepteur

générateur parfait:

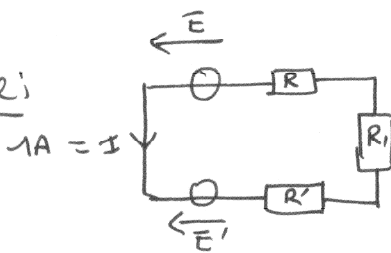
générateur de tension parfait



générateur de courant parfait



Exercice:



$$E = 12V \quad R = 1,2\Omega$$

$$E' = ? \quad R' = 1\Omega$$

$$R = 11\Omega$$

calculer E'

calculer I' si E et E' en série